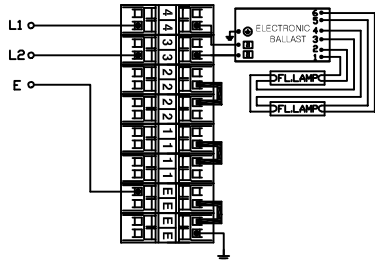
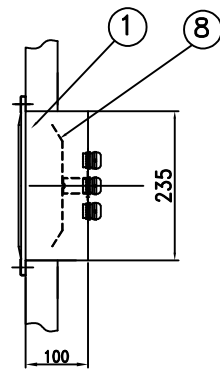
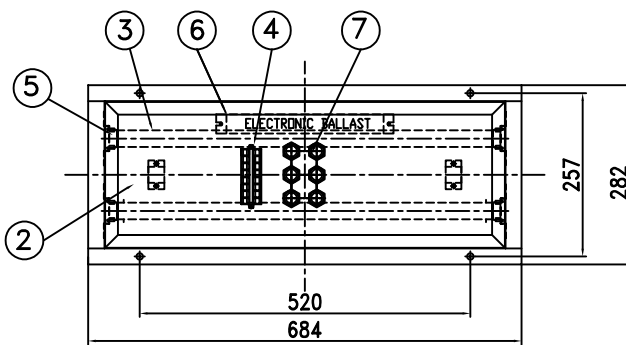
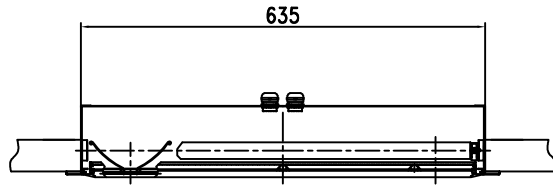
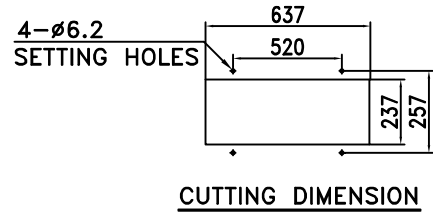


CAPACITY	SYMBOL / SERIAL NO.	CIRCUIT DIAGRAM
AC 230V, 60Hz		
18W x 2		



CIRCUIT DIAGRAM



CUTTING DIMENSION

*** CAUTION**

When cleaning globe, please wipe clean with a damp cloth.
Do not use thinner or (organic) solvent.

8	REFLECTOR	STEEL	1		4	TERMINAL BLOCK	NYLON	1	CLAMPING 8P (2.5sq)
7	CABLE GLAND(M25)	BRASS	6	ø9~ø17	3	LAMP(3-BAND)	-	2	
6	ELECTRONIC BALLAST	-	1		2	GLOBE	POLYCAR- BONATE	1	
5	LAMP HOLDER	POLYCAR- BONATE	4		1	BODY	STEEL	1	
NO	NAME OF PARTS	MATERIAL	Q'TY	REMARKS	NO	NAME OF PARTS	MATERIAL	Q'TY	REMARKS

APPROVED	B. K. KIM	UNIT	MM
CHECKED	J. W. PARK	SCALE	N/S
DRAWING	H. S. SHIN	COLOR	N-9.3
DATE	2016.02.01	IP	44

TITLE;
**FLUORESCENT CEILING LIGHT
(NO-GAP, FLUSH TYPE)**
FOR MARINE USE



MODEL NO.	FL220WF-0236EISNh12C840-A(R25M)	WEIGHT	5.7 Kg
DWG NO.	L11350268	SHEET NO.	58